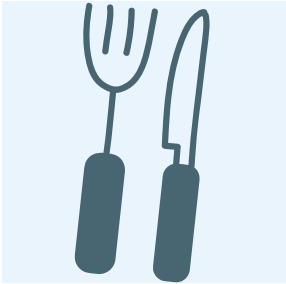




Community Resource Guide

MILLIS

FOOD



Jewish Family & Children Services (JFCS)

1430 Main Street
Waltham, MA 02451
(781) 647-5327

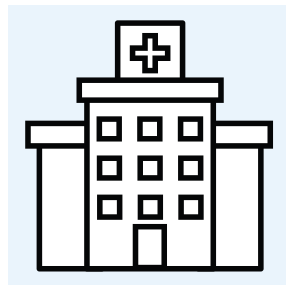
A Place to Turn

99 Hartford Street
Natick, MA 01760
(508)655-8868

Hockomock Area YMCA

300 Elmwood Street
North Attleboro, MA 02760
(508)695.7001

HEALTHCARE



Edward M. Kennedy Community Health Center

354 Waverly Street
Framingham, MA

(508) 270-5700

ELDERLY SERVICES



Millis Council on Aging

900 Main Street
Millis, MA 02054
(508) 376-7051

<https://www.millisma.gov/council-aging>

HESSCO Elder Services

One Merchant Street
Sharon, MA 02067
(781)784-4944

SOCIAL SUPPORT



Safelink

(877) 785-2020

The Massachusetts statewide toll-free domestic violence hotline

Provides access to all DV shelters in the state

Voices Against Violence

Toll Free Hotline (800) 593-1125

Emergency Hotline (508) 626-8686

FAMILY RESOURCE CENTER



Framingham Family Resource Center

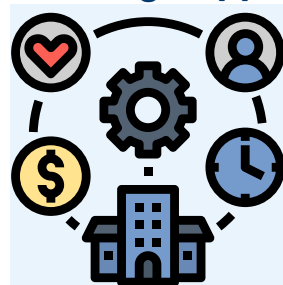
88 Lincoln Street

Framingham, MA 01702

(508) 270-1313

MULTI-SERVICE AGENCIES

(Includes
Housing Support)



South Middlesex Opportunity Council, Inc. (SMOC)

7 Bishop Street

Framingham, MA 01702

(508) 620-2300

Housing Services (508) 872-0765

Rental Assistance (508) 620-2335

Energy & Financial Assistance (508) 620-1230