

METROWEST SHARED PUBLIC HEALTH SERVICES

November 2023



COPD Awareness Month

Did you know that nearly **16 million** people in the U.S. have chronic obstructive pulmonary disease (COPD)?

Learn More Breathe Better is a national health education program that brings greater visibility to lung health by:

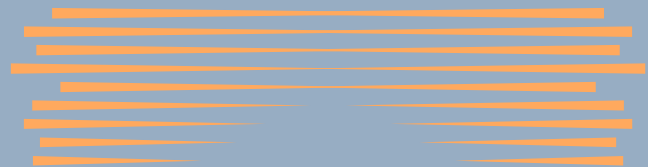
- Increasing awareness of the prevention, treatment, and management of lung and respiratory diseases.
- Increasing recognition of the signs and symptoms of lung diseases to encourage early detection and treatment.

This November, let's join *Learn More Breathe Better* in bringing attention to COPD by sharing videos, fact sheets, infographics, social media resources, and more!



COPD on Social Media:

- Use hashtags like **#COPDMonth** and **#BreatheBetter** to share and access COPD related posts on social media!
- Tag **@BreatheBetter** on Twitter and/or Facebook!
- Women and lung health graphics can be found here.
- Click here for COPD in Rural Communities info & graphics.
- Find COPD and the workplace graphics here.
- Find other lung health information and resources here.



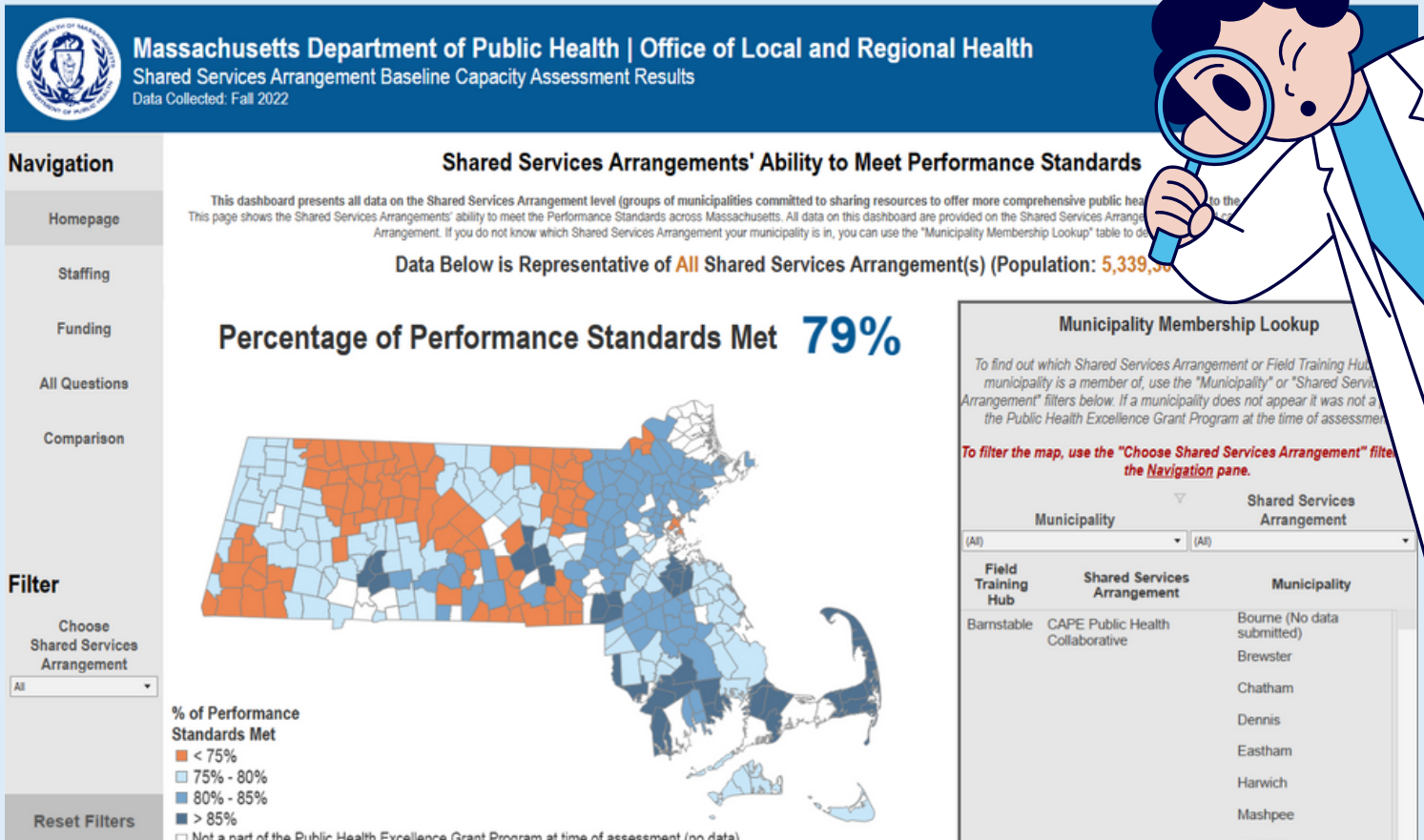
Capacity Assessment Dashboard:

Last fall municipalities participating in the PHE Grant Program underwent the 2022–2023 capacity assessment.

An interactive data dashboard was created to share the data collected in this survey representing health department's self-reported ability to meet the Performance Standards for local public health.

The Capacity Assessment Dashboard **presents all data on the shared services arrangement level** and allows filtration, navigation and comparison by shared service arrangements.

Want to see your city/town's performance standards? Check out the dashboard [here](#).



Massachusetts Department of Public Health | Office of Local and Regional Health
Shared Services Arrangement Baseline Capacity Assessment Results
Data Collected: Fall 2022

Shared Services Arrangements' Ability to Meet Performance Standards

This dashboard presents all data on the Shared Services Arrangement level (groups of municipalities committed to sharing resources to offer more comprehensive public health services). This page shows the Shared Services Arrangements' ability to meet the Performance Standards across Massachusetts. All data on this dashboard are provided on the Shared Services Arrangement table. If you do not know which Shared Services Arrangement your municipality is in, you can use the "Municipality Membership Lookup" table to determine the Shared Services Arrangement.

Data Below is Representative of **All** Shared Services Arrangement(s) (Population: 5,339,360)

Percentage of Performance Standards Met **79%**

% of Performance Standards Met

- < 75%
- 75% - 80%
- 80% - 85%
- > 85%
- Not a part of the Public Health Excellence Grant Program at time of assessment (no data)

Municipality Membership Lookup

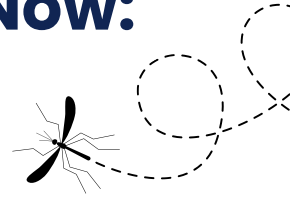
To find out which Shared Services Arrangement or Field Training Hub your municipality is a member of, use the "Municipality" or "Shared Services Arrangement" filters below. If a municipality does not appear it was not a member of the Public Health Excellence Grant Program at the time of assessment.

To filter the map, use the "Choose Shared Services Arrangement" filter in the Navigation pane.

Field Training Hub	Shared Services Arrangement	Municipality
Barnstable	CAPE Public Health Collaborative	Bourne (No data submitted)
		Brewster
		Chatham
		Dennis
		Eastham
		Harwich
		Mashpee

Infectious Disease Trends Happening Now:

West Nile Virus



MDPH has announced the sixth human case of West Nile virus (WNV) in Massachusetts this year. The individual is a male in his 70s who was likely exposed in Middlesex County.

While WNV can infect people of all ages, people over the age of 50 are at higher risk for severe disease and most people infected with WNV will have no symptoms.

Some key messages to communicate with the public as local health departments:

- Although temperatures are starting to fall, some risk from mosquito-borne disease will continue until all areas have had a hard frost.
- People should continue to take steps to avoid mosquito bites when outdoors.
- Continue to avoid mosquito bites by:
 - Applying insect repellent when outdoors
 - Being aware of peak mosquito hours
 - Wearing protective clothing (long sleeves, socks, etc.)
- Drain standing water
- Install or repair screens in your home



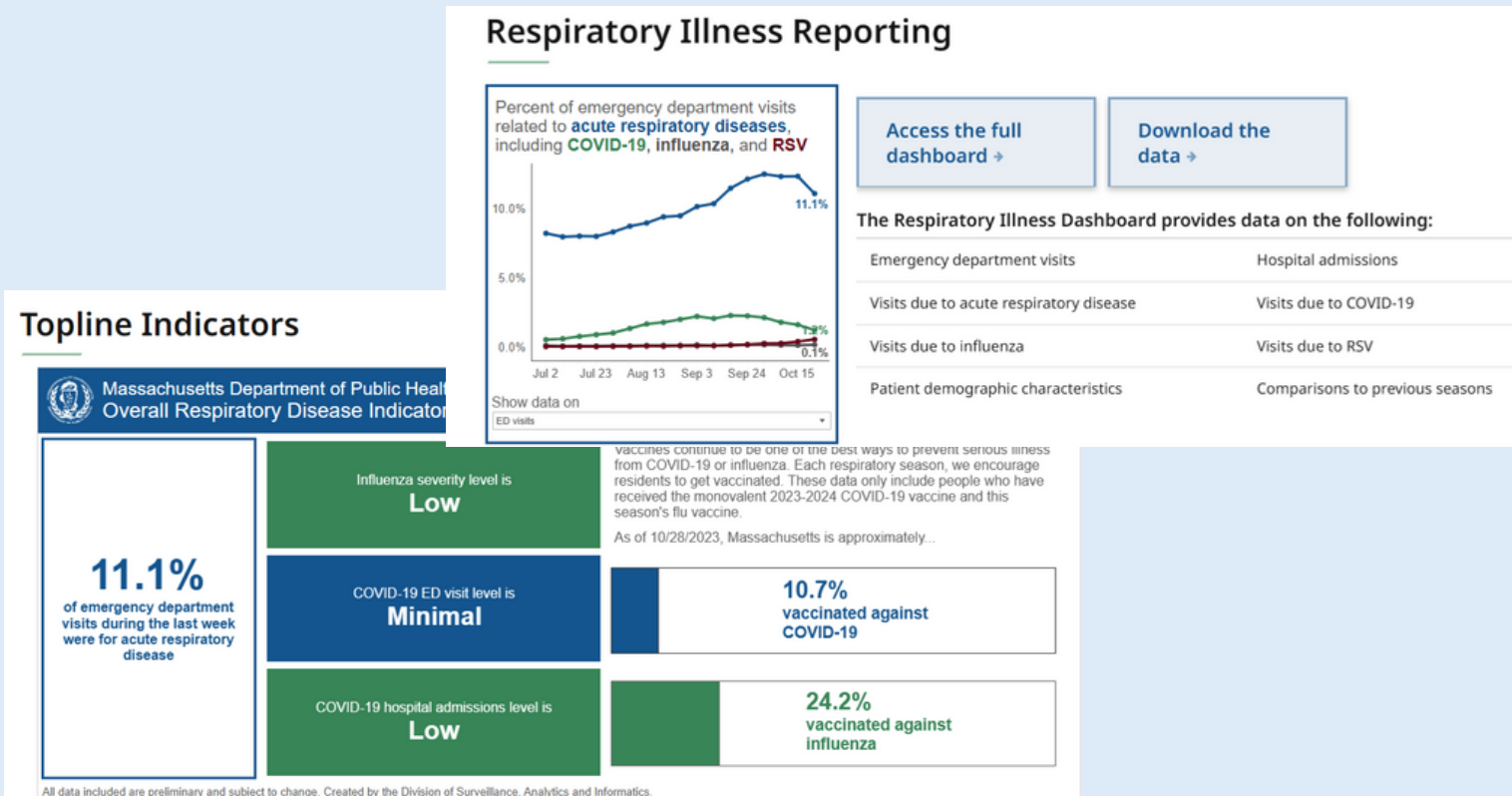
More information, including all WNV and EEE positive results, can be found on the Arbovirus Surveillance Information web page at [Mosquito-borne Diseases](#)



In case You Missed it...

New Viral Respiratory Illness Dashboard:

MDPH launched several new weekly dashboards that track viral respiratory illness trends across the state focusing on COVID-19, influenza, and respiratory syncytial virus (RSV).



The dashboards will streamline the previous weekly flu reports and the COVID-19 data updates. It will consist of:

- Overall respiratory disease indicators
- Respiratory illness dashboard
- COVID-19 cases and deaths
- Influenza Dashboard
- Wastewater dashboard

To access the dashboard, click here.



Webinar and Training Opportunities:

Implementation of Pharmacist Prescribed Contraception: Key Policy Considerations

About: This webinar will orient Pharmacist Prescribed Contraception within the larger movement to expand access to birth control and reproductive justice and describe the key elements of pharmacist prescribed contraception models and policy implications of implementation.

When: November 8th, 2023
2:00–3:30pm

Register [here](#) to attend.

Storage & Handling Issues

About: This webinar will cover how end users who order state-supplied vaccine can report vaccines that become lost or expired to the MDPH through the MIIIS Vaccine Module.

When: November 29th 2023
12:00–1:00pm

Register [here](#).



Epi office hours now available!



Our epidemiologists are now offering office hours to address your epi needs! Here are some examples of services they can assist you with:

- Assistance with MAVEN
- Any data related questions
- Resources and access to data
- Survey implementation and analysis

Monday's from 1:30pm-2:30pm

Contact Manizeh (mafridi@townofhudson.org) or Pooja (pshelke@townofhudson.org) with any questions!

Last month's successes



Check out what the MWSPHS team was up to in the month of October!

Community Events We Attended/ Other

- Natick flu clinic
- MiRA event
- SNAP event
- Asthma home visits
- COVID test deliveries
- Hudson Clothing drive for migrant families
- Mobile Food Pantry
- Emergency/ Shelter Assistance

Inspections in...

- Maynard
- Hudson
- Medway

Epidemiology

- Vaccine needs survey
- Opioid mapping
- Communicable disease reports
- Alcohol & Tobacco license mapping
- Qualitative & quantitative data analysis



See something you might need our help with?

Our team is ready to assist in any of these services for your municipality!

Updated COVID-19 Materials: Coming Soon!

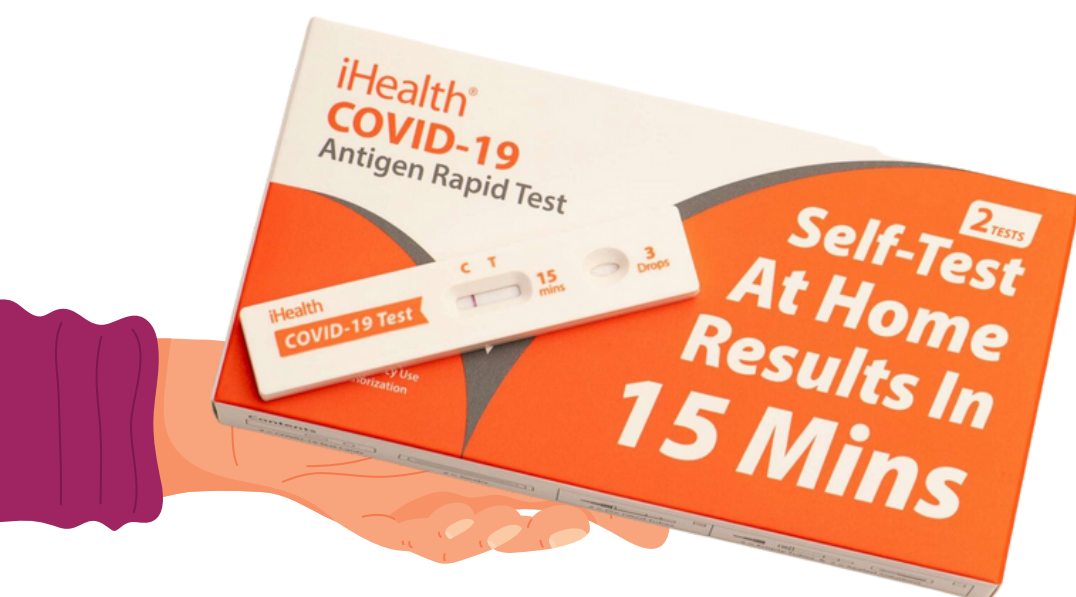
Our team is working on new/updated communications materials to share with your community regarding COVID-19.

In the meantime, please feel free to print out these at-home test kit instructions to hand out along with testing kits!

At-home test instructions (for iHealth test kits) available in:

- [Portuguese](#)
- [Spanish](#)

We haven't forgotten.
Stay tuned!



THANK YOU!



Reminders:

- If you need any documents to be copied in another format (pdf, jpeg, png, etc.) please feel free to email them to Thalita (tcampelo@townofhudson.org)
- All available communication materials and campaigns can be found [here](#).
- Materials may be used on social media and can be updated upon request.
- Please reach out to Deanna for any additional communications requests, questions or needs.